

GRADE 5 WORKSHEET

MY TOWN UNIT 2

A Match the words/phrases with the pictures.

bakery

museum

butcher's

library

mosque

post office

fire station

bank

police station

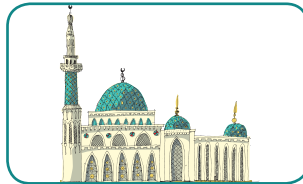
greengrocer's

theatre

bookshop



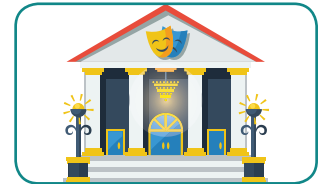
1



2



3



4



5



6



7



8



9



10

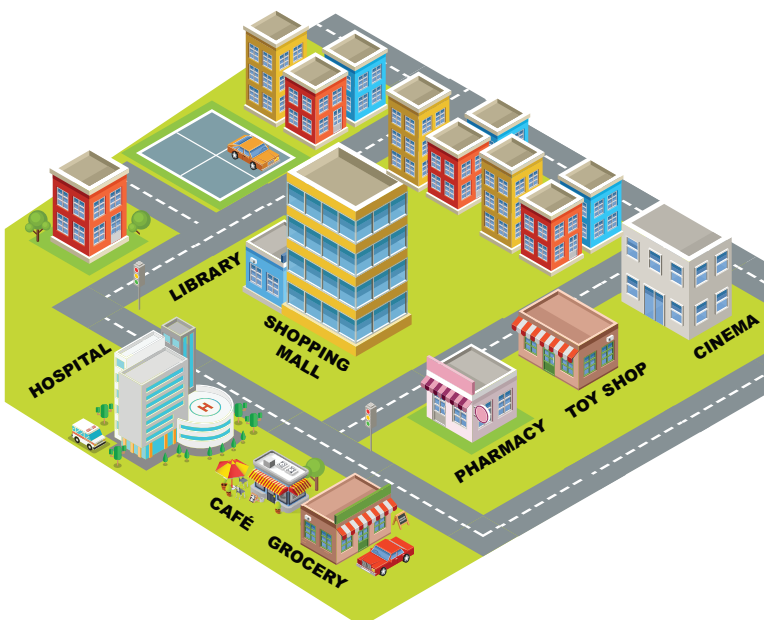


11



12

B Look at the map and complete the sentences with the correct prepositions in the box.

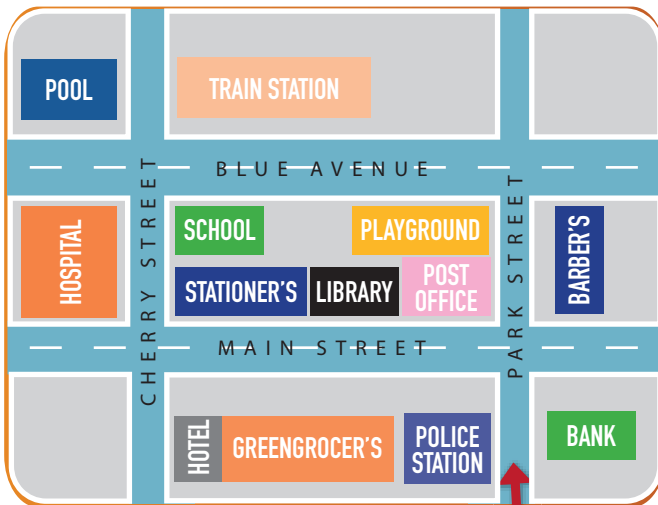


*in front of next to opposite
between near*

- The library is the shopping mall.
- The toy shop is the cinema and the pharmacy.
- The hospital is the shopping mall.
- The café is the hospital.
- The red car is the grocery.

C

Look at the map and complete the sentences with the correct names of the places.



1. A: Excuse me! How can I get to the

B: Take the first left into Main Street. Go past the post office. It is on your right, between the stationer's and the post office.

2. A: Excuse me, where is the

B: Go straight ahead. Take the second left. Go along Blue Avenue. Then turn right. It's on your left, on the corner of Blue Avenue and Cherry Street.

3. A: Hello! Where is the

B: Take the first left. Go along Main Street. Then turn right. It's on your left.

4. A: Hi! How can I get to the

B: Go along Park Street. Take the second left. Go past the playground. It is on your left, opposite the train station.

5. A: Excuse me? Where is the

B: Take the first left. Go past the library. It is on your left, next to the greengrocer's.

D

Circle the correct option.

1. I always go to the - - - - to read some books. I sometimes do my homework there, too.

- A) stationer's B) library
C) museum D) fire station

2. It is my sister's birthday tomorrow. I want to buy her a storybook as a present. I need to go to the - - - -.

- A) bookshop B) post office
C) hospital D) mosque

3. I am going to the - - - -. I have a terrible headache, and we don't have any medicine.

- A) pool B) train station
C) pharmacy D) bank

4. Jane : Hi, Mom! Do you need anything?
Mom : We need some bread. Can you get some from the - - - -?

- A) bakery B) butcher's
C) theatre D) greengrocer's



Alice : Where is the school?

Bill : It is - - - - the hospital.

- A) opposite B) behind
C) between D) next to

6. Gary : You wait for the bus here.

Jill : You watch films here.

Bill : You buy toys here.

Karen: You eat dinner here.

Who is talking about the cinema?

- A) Gary B) Jill
C) Bill D) Karen

ydspublishing

A

- | | | |
|-----------------|-------------------|------------------|
| 1. fire station | 2. mosque | 3. greengrocer's |
| 4. theatre | 5. police station | 6. bakery |
| 7. bookshop | 8. library | 9. post office |
| 10. bank | 11. museum | 12. butcher's |

B

- | | | |
|------------|----------------|-------------|
| 1. next to | 2. between | 3. opposite |
| 4. near | 5. in front of | |

C

- | | | |
|------------|----------|-------------|
| 1. library | 2. pool | 3. hospital |
| 4. school | 5. hotel | |

D

1. B 2. A 3. C 4. A 5. D 6. B