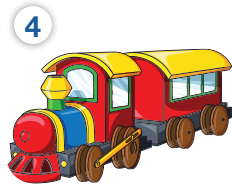


A Write the words under the correct pictures.

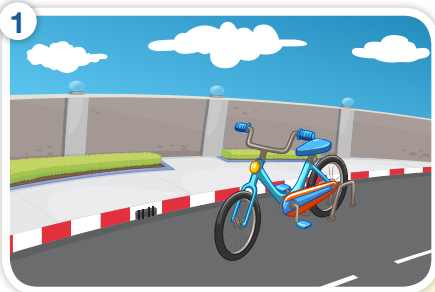
train helicopter plane bus ~~bike~~ scooter car ship motorcycle



bike



B Look at the pictures and complete the sentences with the given phrases.



A: Where is the bike?

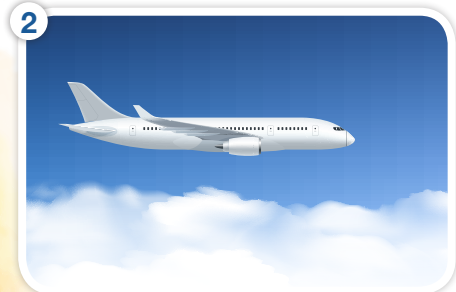
B: It's

on the road

on the river

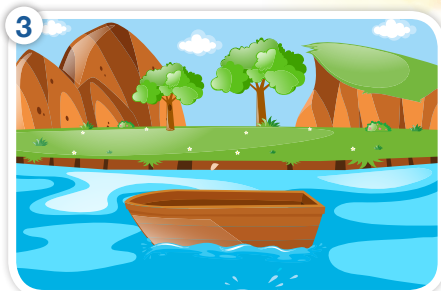
on the sea

in the air



A: Where is the plane?

B: It's



A: Where is the boat?

B: It's



A: Where is the ship?

B: It's

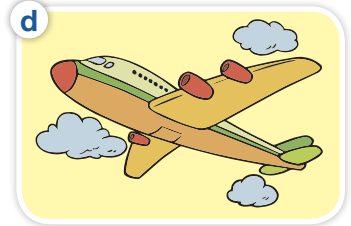
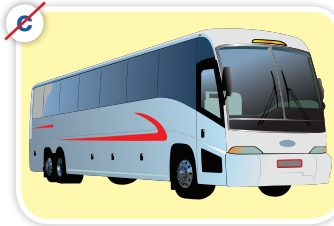
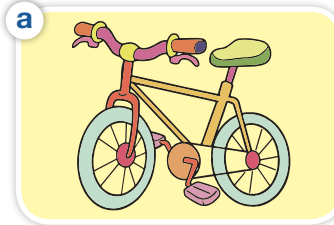
C Read the dialogues and match them with the pictures.

1 **A:** How can I go to Ankara?
B: You can take a bus. c

2 **A:** How can I get to the park?
B: You can go by bike.

3 **A:** How can I go to Erzurum?
B: You can go by plane.

4 **A:** How can I get to the hospital?
B: You can go on foot.



D Look at the pictures and complete the sentences with the given phrases.

at the station at the bus stop
at the airport at the garage

1  The car is

2  The train is


3  The plane is

4  The bus is

E Circle the correct option.

1. **A:** How can I go to Paris?
B: You can go by plane.



2. 
A: Where is the scooter?
B: It's - - - - .

A) here

B) there

3. **A:** Where is the car?
B: It's - - - - .

A) on the river
B) on the road



4. **A:** - - - - ?
B: You can go by bus.
A) How can I get to the school
B) Where is the hospital

ydspublishing

A

2. car
3. helicopter
4. train
5. motorcycle
6. plane
7. bus
8. ship
9. scooter

B

1. on the road
2. in the air
3. on the river
4. on the sea

C

2. a
3. d
4. b

D

1. at the garage
2. at the station
3. at the airport
4. at the bus stop

E

1. B
2. A
3. B
4. A